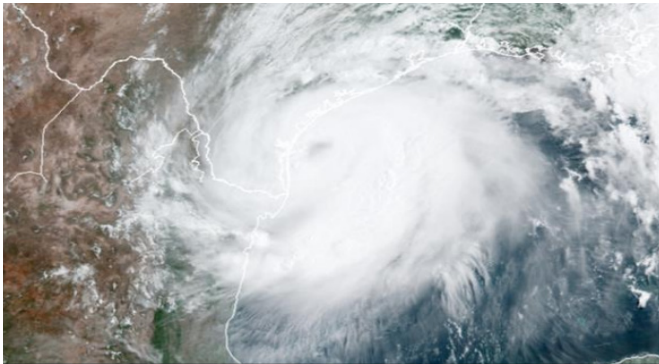




Nueces Electric Cooperative

Your Touchstone Energy® Cooperative 

Hurricane Season is Officially Here!



June 1st marks the official start of the hurricane season with the peak storm threat occurring from mid-August to late October. Nueces Electric Cooperative wants you to be prepared in the event of a dangerous storms. Keep your family safe with these handy tips.

Before the storm

- * Put together an emergency kit and plan. Communicate the plan with family.
- * Know the elevation level of your property and whether the land is flood-prone. * This will help you prepare for the storm surge and any tidal flooding.
- * Secure your home: cover all windows with either storm shutters or boards, clear loose and clogged rain gutters, and bring all outdoor furniture indoors.
- * Learn your community hurricane evacuation routes.
- * It is important for NEC to have your up to date contact information. Call us at 361-387-2581 and update your mailing address, phone number, or email.

During the storm

- * Listen to the radio or TV for information, if possible.
- * Avoid using the phone, unless there is an emergency.
- * Turn off utilities if instructed to do so. Otherwise, keep the refrigerator thermostat on the coldest setting and keep the doors closed.

After the storm

- * Keep away from loose or dangling power lines and report them immediately to NEC.
- * Drive only if necessary and avoid flooded roads. Watch out for fallen objects, downed power lines and weakened walls, bridges or sidewalks.
- * **NEVER** use a generator inside homes, garages, crawl spaces, sheds or similar areas. Deadly levels of carbon monoxide can quickly build up in these areas.

Do You Have A Emergency Kit Prepared?



Whether you're evacuating or sheltering-in-place, you're going to need supplies not just to get through the storm but for the potentially lengthy and unpleasant aftermath. An emergency preparedness kit is a first step to ensure families and businesses can sustain themselves. Emergency Kit supplies can be contained in new, large trashcans, backpacks or suitcases and can be assembled over several months by adding just one or two items to a grocery list.

Keep your family safe with these handy tips:

- *Build emergency supplies by grabbing extra at the store *before* an emergency.
- * As part of your family's emergency kit, include games & toys to keep children entertained.
- * Include a hand-crank or battery powered radio in your emergency kit. More tips: ready.gov/kit
- * During an extended power outage, ATMs & credit card machines may not work. Include extra cash \$\$ in your emergency kit.
- * Store supplies at the places you frequent most like work and home in case you need to shelter in place during a hurricane.
- * Do you have enough batteries? Find out what supplies you should have on hand: ready.gov/kit
- * Gather your #hurricane supplies now, so you will be prepared and not be tempted to drive on possibly flooded roads. A basic supply list can be found here: ready.gov/kit.
- * Keep emergency supplies in your car in case you need to evacuate due to a hurricane.
- * Charge and keep back-up batteries in your emergency kit for devices that help you communicate and stay mobile. This is especially important for people with disabilities who use these devices.

For more tips on planning before, during, and after the storm, visit ready.gov/hurricanes.



Nueces Electric Cooperative

Your Touchstone Energy® Cooperative 

TEXAS DIVISION OF EMERGENCY MANAGEMENT

Hurricane Preparedness Guidelines

Hurricane Season is June 1–November 30

PREPAREDNESS CHECKLIST:

- * Make an evacuation plan. Find activated evacuation routes at DriveTexas.org or by dialing 1-800-452-9292. Call 211 to find out if you live in an evacuation zone.
- * Sign up for emergency alerts. Make sure your mobile device is enabled to receive Wireless Emergency Alerts (WEAs).
- * Prepare an emergency supply kit. Learn how to build an emergency kit at ready.gov/build-a-kit.
- * Review your home insurance policy.
- * Register with State of Texas Emergency Assistance Registry (STEAR) at stear.tdem.texas.gov/ or by dialing 211 if you live in an evacuation zone and:
 - Have a disability or medical needs and do not have a car or other vehicle to use in an evacuation.
 - Have a disability or medical needs and do not have friends or family to help in an evacuation.Information collected for STEAR is confidential.

HURRICANE PREPAREDNESS ONLINE RESOURCES

Texas Division of Emergency Management: tdem.texas.gov
Texas Department of State Health Services: texasready.gov
American Red Cross: redcross.org
U.S. Department of Homeland Security: ready.gov
Office of Texas Governor Greg Abbott: gov.texas.gov

DIVISIÓN DE ADMINISTRACIÓN DE EMERGENCIAS DE TEXAS

Directrices para Huracanes

La temporada de huracanes es del 1 de junio al 30 de noviembre

LISTA DE VERIFICACIÓN DE PREPARACIÓN:

- * Haga un plan de evacuación. Encuentre rutas de evacuación activadas en DriveTexas.org o marcando 1-800-452-9292. Llame 211 para averiguar si usted vive en una zona de evacuación.
- * Regístrese para recibir alertas de emergencia. Asegúrese de que su dispositivo móvil esté habilitado para recibir Alertas de emergencia inalámbricas (WEAs).
- * Prepare un kit de emergencia. Aprenda como construir un kit de emergencia en ready.gov/build-a-kit.
- * Revise su póliza de seguro de hogar.
- * Regístrese con el Registro de Asistencia de Emergencia del Estado de Texas (STEAR) en stear.tdem.texas.gov/ o marcando el 211 si vive en una zona de evacuación y:
 - Tiene una discapacidad o necesidades médicas y no tiene un auto u otro vehículo para usar en una evacuación.
 - Tiene una discapacidad o necesidades médicas y no tiene amigos o familiares para ayudaren una evacuación.

La información recolectada para STEAR es confidencial.

RECURSOS EN LÍNEA PARA LA PREPARACIÓN PARA HURACANES

División de Administración de Emergencias de Texas: tdem.texas.gov
Departamento de Servicios de Salud del Estado: texasready.gov
Cruz Roja Americana: redcross.org
Departamento de Seguridad Nacional de los Estados Unidos: ready.gov